



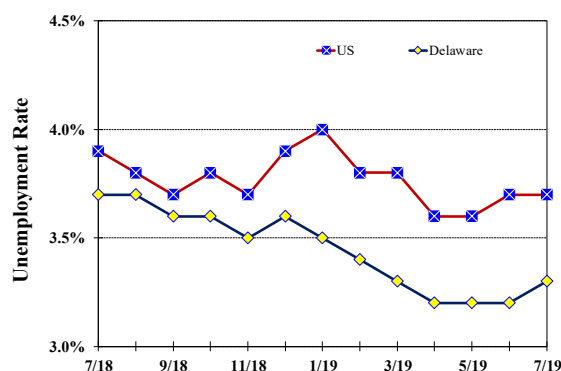
Cerron Cade, Secretary

Monthly Labor Review

July 2019

Unemployment Rate

Delaware and US
July 2018 - July 2019



Monthly Commentary

Delaware's monthly unemployment rate rose for the first time this year in July; it was only the third monthly increase in the last seven years. The small increase from 3.2 percent to 3.3 percent is not significant in itself, but there are other indicators which bear watching. Job growth, as measured by the Current Employment Statistics (CES) survey of business establishments in the state is up a relatively healthy 3,700 jobs over the past 12 months, but all of that came in 2018. Since December, the number of jobs has dropped by 500. A similar change can be seen at the national level, where job growth averaging 218,000 per month the last five months of 2018 has slowed to 141,000 per month since January.

The slower national growth is even more apparent in the household survey data. The number of employed people is up by 1,324,000 in the US over the past 12 months, but only by 343,000 since December, dropping monthly employment growth by more than half. That hasn't been reflected in the Delaware household numbers, where employment is up by 8,100 in the last 12 months, and by 6,800 since December. While all of these survey-based numbers are subject to error, it is this measurement that seems to be the anomaly.



Delaware Civilian Labor Force Delaware Residents

	July 2019	June 2019	July 2018
Civilian Labor Force	489,000	488,800	482,900
Employed	473,000	473,100	464,900
Unemployed	16,000	15,700	18,000
Unemployment Rate %	3.3	3.2	3.7
US Unemployment Rate %	3.7	3.7	3.9

Source: Delaware Dept. of Labor in cooperation with the US Dept. of Labor, Bureau of Labor Statistics.

Area Unemployment Rates (%)

	July 2019	June 2019	July 2018
New Castle County	3.8	3.6	4.1
Wilmington	5.5	5.5	5.9
Newark	4.0	3.7	4.5
Kent County	4.5	4.2	4.7
Dover	5.9	5.7	6.1
Sussex County	3.2	3.2	3.3

Note: Area rates are not seasonally adjusted.

Source: Delaware Dept. of Labor in cooperation with the US Dept. of Labor, Bureau of Labor Statistics.

Office of Occupational and Labor Market Information
For data questions, contact: George Sharpley, Ph.D. (302) 761-8060

Delaware Labor Force Trends

Delaware's seasonally adjusted unemployment rate in July 2019 was 3.3%, up from 3.2% in June 2019. There were 16,000 unemployed Delawareans in July 2019 compared to 18,000 in July 2018. The US unemployment rate was 3.7% in July 2019, unchanged from June 2019. In July 2018 the US unemployment rate was 3.9%, while Delaware's rate was 3.7%.

In July 2019, seasonally adjusted nonfarm employment was 463,700, down from 464,600 in June 2019. Since July 2018, Delaware's total nonfarm jobs have increased by a net gain of +3,700, a rise of 0.8%. Nationally, jobs during that period increased 1.5%.

Delaware Nonfarm Employment

Jobs at Delaware Locations
Seasonally Adjusted (in 000s)

INDUSTRY GROUP	July 2019	June 2019	Over the Month Change	Over the Year Change†
TOTAL NONAG. EMP.	463.7	464.6	-0.9	3.7
CONSTRUCTION	23.1	23.2	-0.1	1.2
MANUFACTURING	27.7	27.7	0.0	0.7
Durable Goods	9.8	9.7	0.1	0.3
Nondurable Goods	17.9	18.0	-0.1	0.4
TRADE, TRANSP., & UTIL.	78.6	78.8	-0.2	-1.1
Wholesale Trade	11.2	11.2	0.0	0.4
Retail Trade	51.5	51.8	-0.3	-1.1
Transp. & Utilities	15.9	15.8	0.1	-0.4
INFORMATION *	4.0	3.9	0.1	0.0
FINANCIAL ACTIVITIES	47.9	47.7	0.2	0.5
PROF. & BUS. SERVICES	61.9	62.4	-0.5	-2.2
EDUCATION & HEALTH	82.2	82.1	0.1	2.2
LEISURE & HOSPITALITY	52.1	52.3	-0.2	1.6
OTHER SERVICES	18.3	18.9	-0.6	-0.2
GOVERNMENT	67.9	67.6	0.3	1.0
Federal Government	5.8	5.8	0.0	0.1
State Government	33.2	33.1	0.1	-0.5
Local Government	28.9	28.7	0.2	1.4

* Industries are not seasonally adjusted.

† Annual changes are not seasonally adjusted.

Details may not add up due to rounding and seasonal adjustment.

Source: US Department of Labor, Bureau of Labor Statistics.

Office of Occupational and Labor Market Information

For data questions, contact:

George Sharpley, Ph.D.

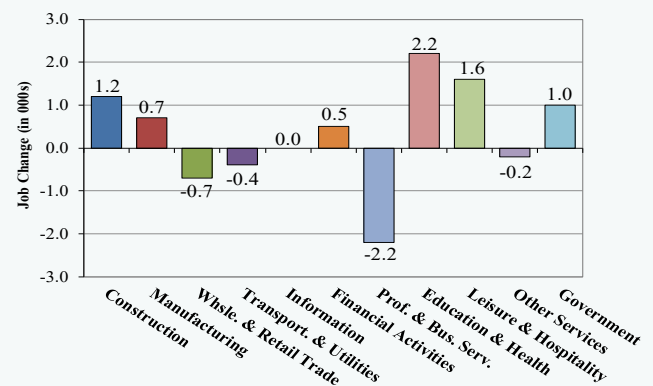
(302) 761-8060

<https://lmi.delawareworks.com>



Delaware Over-the-Year Job Change

July 2018—July 2019



Consumer Price Index

All Urban Consumers

	Percent Change to July 2019 from:		
	June 2019	May 2019	July 2018
US City Average	0.2	0.2	1.8
Phila.-Camden-Wilm.*	NA	NA	NA

* Data are published on a bi-monthly basis.

Delaware Annual Net Job Change

Annual Average 1998—2018

