



Proudly Announcing the Homsey Studio at Tevebaugh Architecture!

We are excited to announce that respected architects Charles Ryan, AIA and Curtis Harkin, AIA are joining the Tevebaugh Architecture team, creating a specialized design service as part of the new Homsey Studio at Tevebaugh Architecture!

Since 1935, the Homsey name has been synonymous with some of the most significant buildings in the Delaware region. Chuck and Curt will continue that legacy at Tevebaugh, providing clients an expert design service offering through the Homsey Studio at Tevebaugh Architecture. With this expert service offering, Tevebaugh Architecture adds 60+ years of experience to our team, and creates an unparalleled portfolio of design expertise for our clients with Chuck and Curt in project leadership roles alongside the Tevebaugh team of creative design leaders.

Sean Goodrick, Director of Studio Operations for Tevebaugh Architecture conveyed, "This is one of the most exciting developments in the storyline of two of Wilmington's most respected names in architecture. I began my professional design career at Homsey almost 20 years ago, and I could not be more excited at the opportunity to play a part in continuing the legacy of the Homsey name here at Tevebaugh Architecture. Together with my business partners Bill Lenihan and Shawn Crowley, we extend a heartfelt welcome to Chuck and Curt as they join the Tevebaugh team to continue the outstanding level of design and project leadership for which they are known."

Charles B Ryan, AIA brings over 40 years of experience to each new project with a wide-reaching expertise in a variety of projects, including corporate, institutional, educational, cultural, and historic preservation. Chuck's leadership in regional historic preservation has created an important legacy through projects like the Ships Tavern District revitalization, The Baby Grand Theater, The Queen Theater revitalization, and most recently the Uptown! Knauer Performing Arts Center adaptive re-use in West Chester, Pennsylvania.

Curtis C. Harkin, AIA brings 31 years of experience, and a passion for wholistic design, from concept to completion. Curtis is proud to be a key contributor to the revitalization of downtown Wilmington through his design and supervision of many award-winning adaptive reuse projects, including the restoration of two monumental LoMa District projects: the Queen Theater, and the Ships Tavern Mews revitalization. In addition, Curt's important regional contributions also include the new Camp Arrow Head dining and events hall, and the Wilmington University Brandywine Campus.

For project inquiries, please contact homseystudio@tevebaugh.com.

Beebe Healthcare Named America's 100 Best for Pulmonary Care

Beebe Healthcare has been named as one of America's 100 Best Hospitals for Pulmonary Care according to new research released by Healthgrades, the leading resource that connects consumers, physicians, and health systems.

Every year, Healthgrades evaluates hospital performance at nearly 4,500 hospitals nationwide for 32 of the most common inpatient procedures and conditions using Medicare data, and outcomes in appendectomy and bariatric surgery using all-payer data provided by 16 states.

The hospitals that have achieved the Healthgrades America's 100 Best Hospitals for Pulmonary Care have demonstrated exceptional quality of care. From 2017-2019, patients treated at hospitals receiving the America's 100 Best Hospitals for Pulmonary Care Award have, on average a 52.4% lower risk of dying than if they were treated in hospitals that did not receive the award.

"Beebe's Respiratory and Pulmonary teams are committed to providing quality care to our patients and their dedication to excellence made this designation possible," said David A. Tam, MB, MBA, FACHE, President & CEO, Beebe Healthcare. "This year, we are especially proud of our Respiratory and Pulmonary teams as they have also faced the challenges of COVID-19."

Saint Francis Receives Grant to Extend Mobile Healthcare Services

New Castle County awarded Saint Francis Healthcare, a part of Trinity Health Mid-Atlantic, a Health Equity Grant of \$895,000. The grant enables Saint Francis to expand the services

Newsbites

available to vulnerable populations by its St. Clare Medical Outreach Van, such as care for the home-bound elderly, food insecure families and the homeless.

The grant money will be used to design and build an entirely new mobile health van that will expand primary care services, as well as offer social care and behavioral health services, provided through a partnership with Catholic Charities. The grant will also enable the

expansion of operations; provide for the hiring of a Health Equity Coordinator; and provide resources to ensure hungry families and children have access to healthy food.

“Since day one, our mission has been to protect our County’s most vulnerable,” said New Castle County Executive Matt Meyer. “We are pleased to provide CARES Act funding to support the expansion of services

provided by St. Francis and their St. Clare Medical Outreach Van to provide testing and other services throughout the pandemic.”

“We are proud to have been selected for this grant funding, which will enable us to serve more members of our community in need. We appreciate New Castle County’s faith and confidence in Saint Francis and our programming, which this award reflects,” said Saint Francis President Brandon Harvath. “The pandemic has exacerbated the struggles vulnerable populations face. This funding enables us to significantly increase the numbers of individuals and families served in the community.”



Scientists Discover Second Key Pathway in Colon Cancer Stem Cell Growth

In breakthrough colon cancer research, scientists at ChristianaCare’s Helen F. Graham Cancer Center & Research Institute have discovered a link between two key signaling pathways crucial to the development and growth of colon cancer. The study is published today in the journal PLOS ONE.

The scientists identified the link between the retinoic acid or RA signaling pathway and another pathway critical to tumor development, called the Wntless-related integration site or WNT pathway. WNT signaling gone wrong is associated with numerous cancers, likely contributing to drug resistance and tumor recurrence.

“There are only a handful of major pathways involved in the regulation of stem cells that control development of the embryo, and we are finding for the first time that dysregulation of two of them, both WNT and RA signaling, are equally important to the development of colorectal cancer,” said Bruce Boman M.D., Ph.D., MSPH, FACP, lead author and senior research scientist at the Cawley Center for Translational Cancer Research at the Graham Cancer Center.

Dr. Boman’s research team has contributed to the understanding of normal stem cells and how cancer stem cells play a role in the development and spread of colorectal cancer.

Delaware Hits 99.9% Complete in 2020 Census!

As of the end of data collection for the 2020 Census, 99.9% of housing units and addresses have been accounted for in Delaware.

The U.S. Constitution mandates a census of the population every 10 years. The 2020 Census counts everyone living in the United States as of April 1, 2020. In addition to determining the number of seats each state holds in the U.S. House of Representatives, census results inform how hundreds of billions of dollars in federal funds will be allocated for the next 10 years for critical public services and infrastructure like emergency response, fire departments, schools, hospitals, roads and bridges.



United States®
Census
2020

AT&T Expands Mobile Broadband Network Across Delaware

AT&T continues to invest in Delaware, giving FirstNet subscribers and other customers in the First State another boost in mobile broadband connectivity.

In Kent County, AT&T turned on a new site in the town of Hartly that provides coverage along the border between

Delaware and Maryland, as well as along Routes 44 and 11. Another new site in Kent County will cover the towns of Staytonville, Oakley, and Farmington, as well as Route 13 between Farmington and Greenwood.

A new site in Seaford, Sussex County will improve coverage along Route 13 and Seaford Road (Alternate Route 13), as well as surrounding neighborhoods and businesses.

And, a new site north of Smyrna in New Castle County will improve coverage along Routes 1 and 13.

"Delawareans are relying on mobile broadband service more each day. That's why we continue to build out our network across the First State, including our more rural communities," said Denis Dunn, president, AT&T Delaware. "These new sites will give our first responders, families and businesses in the area more access to the mobile broadband connections that are so important to the safety, vibrancy and competitiveness of the First State."

Potter Anderson Again Receives Compass Award from Leadership Council on Legal Diversity

At the Leadership Council on Legal Diversity's annual meeting,

Local McDonald's® Owner/Operator Michael Meoli Expands Footprint in Delaware, Adding Six Restaurants to Company Portfolio

Local McDonald's® Owner/Operator Michael Meoli and The Meoli Companies have acquired six McDonald's restaurants in Dover, Delaware, making them the largest owner/operator organization in the state.

The Meoli Companies, which now operates 25 McDonald's restaurants across the Delmarva Peninsula, is dedicated to hiring outstanding people, building and maintaining the best restaurants, and delivering a gold-standard experience for its customers.

"It's our commitment to use our scale for good and bring the best that McDonald's has to offer to Dover and each of the communities in which our restaurants operate," Meoli said. "The growth of our organization allows us to do more for our employees, our managers, and for our communities, now and for years to come."

Michael Meoli has owned and operated McDonald's restaurants on Delmarva since 1991 and has been recognized with numerous regional and national corporate awards including the Golden Arch® Award which recognizes the top 1% of owner/operators in the world.



Potter Anderson and Kathleen Furey McDonough, the firm's chair, were recognized with the LCLD Compass Award. LCLD is made up of more than 300 corporate chief legal officers and law firm managing partners, working to build a more open and diverse legal profession. The Compass Award is given in recognition of significant involvement in supporting LCLD's work.

Chesapeake Utilities Corporation Completes State-of-the-Art Training Facility

Chesapeake Utilities Corporation (NYSE: CPK) announced the completion of the Company's new state-of-the-art training facility in Dover. The training center, named 'Safety Town,' will serve

as a resource for training employees Company-wide who build, maintain and operate the Company's infrastructure and will also support training of regional first responders.

"There is nothing more important than the safety of our team, our customers and our communities. Training and preparing our current and future employees and contractors is critical to maintaining a skilled workforce," said Shane Breakie, Vice President of Chesapeake Utilities. "Our Safety Town training center provides employees hands-on training and simulated on-the-job field experiences, which will help us maintain the integrity of our current infrastructure and future projects such as the Somerset County Natural Gas Expansion."



Karins and Associates acquires Adams-Kemp Associates

Karins and Associates, an engineering, surveying and planning firm, is pleased to announce the acquisition of Adams-Kemp Associates, Georgetown, Delaware, a land planning and surveying firm specializing in boundary surveys, control surveys, topographic surveys, wetlands location surveys, construction stakeout, site plans and small subdivision design.

“Adams-Kemp has built an exemplary reputation providing services to clients in Sussex County and the surrounding areas over the last 32 years,” says Dev Sitaram, P.E., president of Karins and Associates. “Their services and markets compliment those of Karins’ in Delaware, so we are excited to partner with them to increase our presence in the market with this acquisition. Their culture of providing responsive service and practical solutions is very similar to ours. We welcome and look forward to the integration of their employees onto the Karins’ team. Chuck and R.B. will continue to manage surveying services in Georgetown as vice presidents. John Johnson, vice president of Karins, will work with them to assure the seamless integration of the firms.”

Whisman Giordano & Associates, LLC Announces the Hiring of Two New Accountants

Linzy Bouton is a graduate of Wilmington University with a degree in accounting. She is focused on both the audit and tax practices of the firm. She shared that she is “grateful” for the opportunity to join Whisman Giordano and is ready to contribute to the overall success of the firm.

Chloe Kennedy is a graduate of Lock Haven University in Lock Haven, PA, with a



degree in accounting. She was a member of multiple business and accounting clubs in college. Chloe states, “I’m really looking forward to being involved with clients and learning from the whole team.”

President and Managing Partner, Joseph V. Giordano says, “It’s always exciting to welcome accountants who are early in their career. We invest in our people, so they’ll grow and stay with us for the long-term. We always hire with our motto, Building Extraordinary Relationships, in mind. We look for people who are, first and foremost, good

and decent humans, which is what drew us to both Chloe and Linzy. They have a hunger to learn and a great attitude. I’m confident that they’ll be true assets to our clients and to the team.”

As Audiences Battle Chronic Stress, GillespieHall’s Storytelling Uplifts During Pandemic

PR and Strategic Communication firm GillespieHall was recognized with two 2020 Hermes Creative Awards for compelling storytelling and visual identity branding during a pandemic.

“We’re delighted to receive this national recognition again. Promoting health prevention messaging is always a challenge,” says GillespieHall partner Bridget Pavard. “Add the pandemic and a toxic election into that mix and it is overwhelming – a reason for everyone to switch off. Many of our long-standing clients serve communities suffering from addiction and mental health issues – we had to create messages for audiences already feeling a sense of restlessness and helplessness. With everyone hungry for examples of success, the GH team focused on stories of hope, resilience, and inspiration. Our goal was to help reshape dispositions and inspire communities in recovery to keep going. It worked. Our clients, and their clients, were incredibly pleased with the results.”

Potter Anderson Announces New eDiscovery Counsel

Potter Anderson & Corroon LLP today announced the addition of Laura G. Readinger as eDiscovery counsel at the firm. Readinger will advise clients and co-counsel on eDiscovery and manage the firm’s eDiscovery processes.

Leading Potter Anderson’s eDiscovery practice, Readinger will provide legal

support for all eDiscovery-related matters, including the preservation, collection, processing, hosting, review and production of data. Readerger will also advise firm litigators and clients on eDiscovery best practices. She will implement and oversee the program, including its policies and procedures, in conjunction with practice group leaders.

"We are thrilled to welcome Laura to the firm in this important role," said Peter J. Walsh, Jr., chair of the firm's Corporate Group. "Laura's experience counseling clients on the challenges associated with this complex and continually changing area of litigation is a strong addition to our firm."



Drew Gerard Wins Telgian Engineering & Consulting Top Gun Award

Fire protection, life safety and security industry leader Telgian recently announced the recipients of the company's annual Top Gun Awards. The winner for the Telgian Engineering & Consulting (TEC) business unit was Drew Gerard.

Although the Top Gun Awards recognize top performing company sales for the year, "Drew Gerard does not just 'make sales,'" explains Telgian Executive Chairman Russell Leavitt. "He does it the right way — with integrity and honor."

Based in Greenville, Delaware, Gerard is the MidAtlantic Fire Protection Engineering Practice Leader for Telgian Engineering & Consulting. He is a registered Fire Protection Engineer in 20 states, as well as a Certified Fire Protection Specialist with over 12 years of experience. His fire protection and life safety expertise spans a wide array of sectors such as healthcare, educational, large retail, commercial, and industrial.

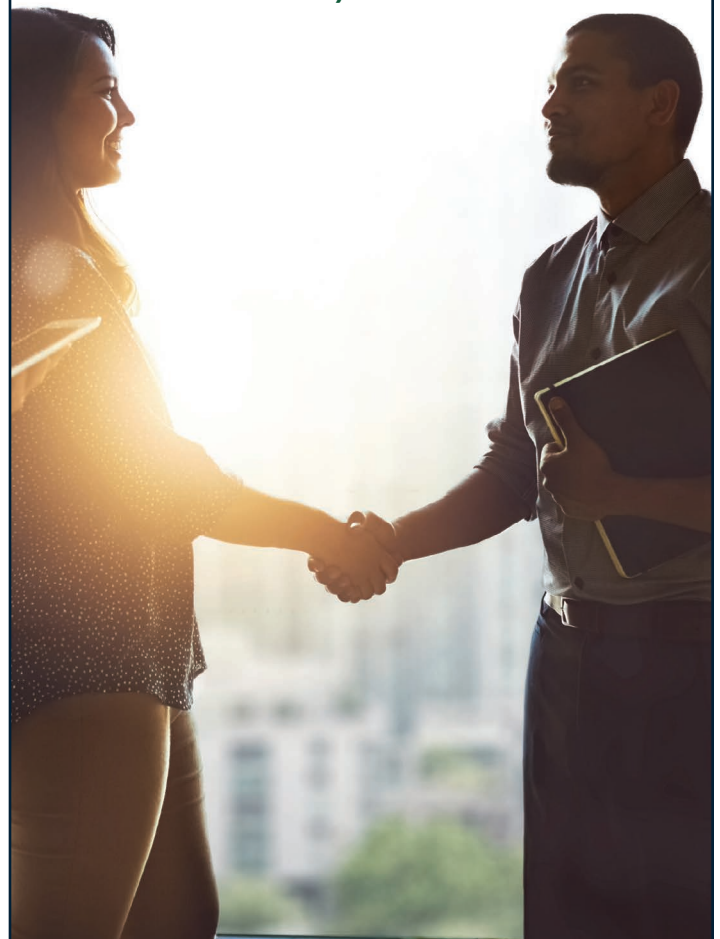


KELLY

Benefit Strategies

The Business of Better

*People who care
Technology that matters
Comprehensive solutions
customized and integrated
to meet your needs*



BENEFITS • PAYROLL • TECHNOLOGY

kellybenefitstrategies.com