

THE VACCINE IS HERE: NOW WHAT?

**FEBRUARY 4, 2021
11:00 AM - 12:00 PM**

SPONSORED BY:



HOSTED BY:



REGISTER AT www.DSCC.com





DELAWARE STATE CHAMBER OF COMMERCE

CHAMBER LEADERSHIP
BREAKFAST WITH
JENNIFER COHAN



SPRING MANUFACTURING & POLICY CONFERENCE

Presenting Sponsor:

DEMEEP

Delaware
Manufacturing
Extension
Partnership

March 24, 2021
9:00 am – 11:00 am



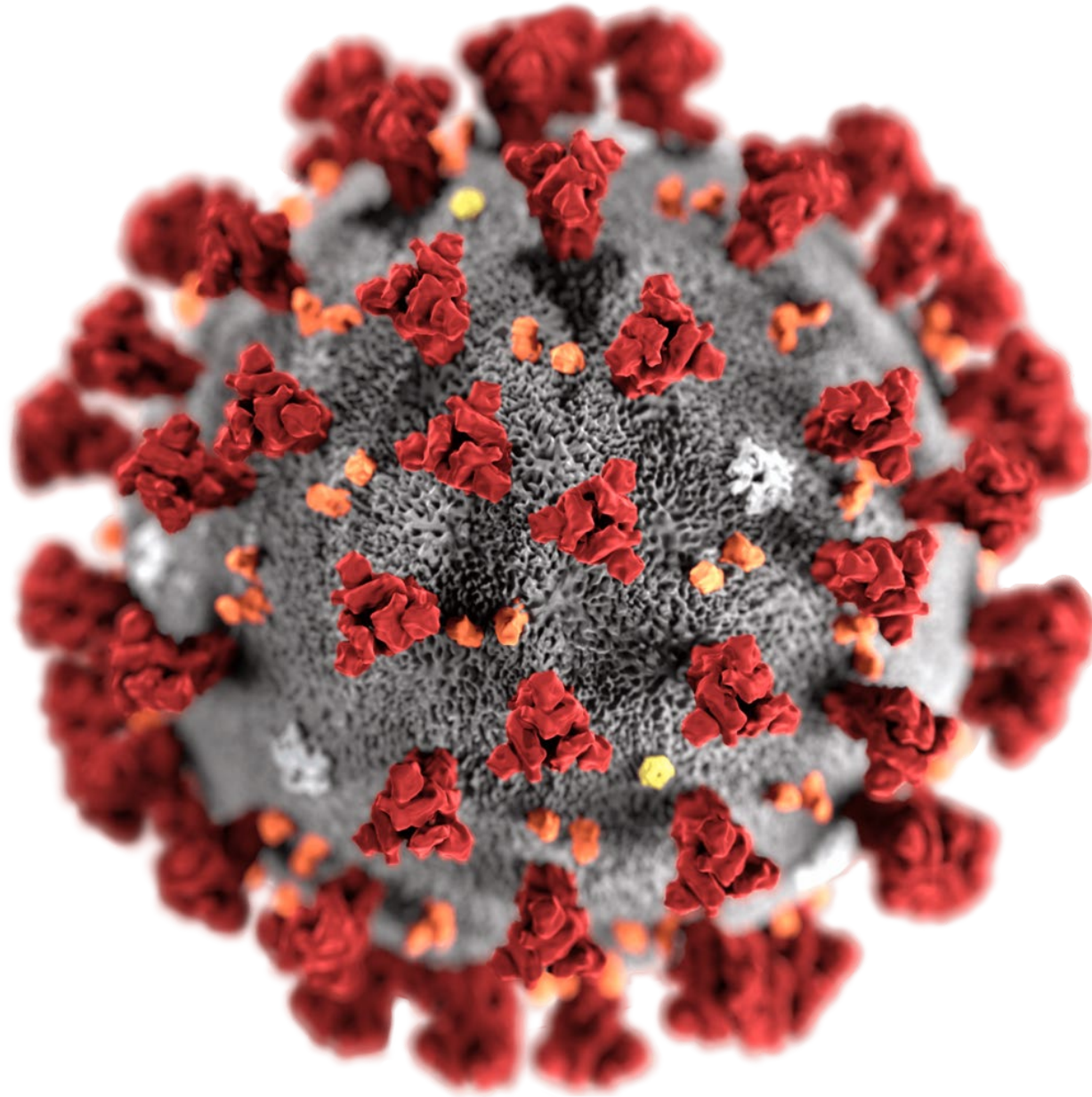


COVID-19 Vaccine Update

February 2021

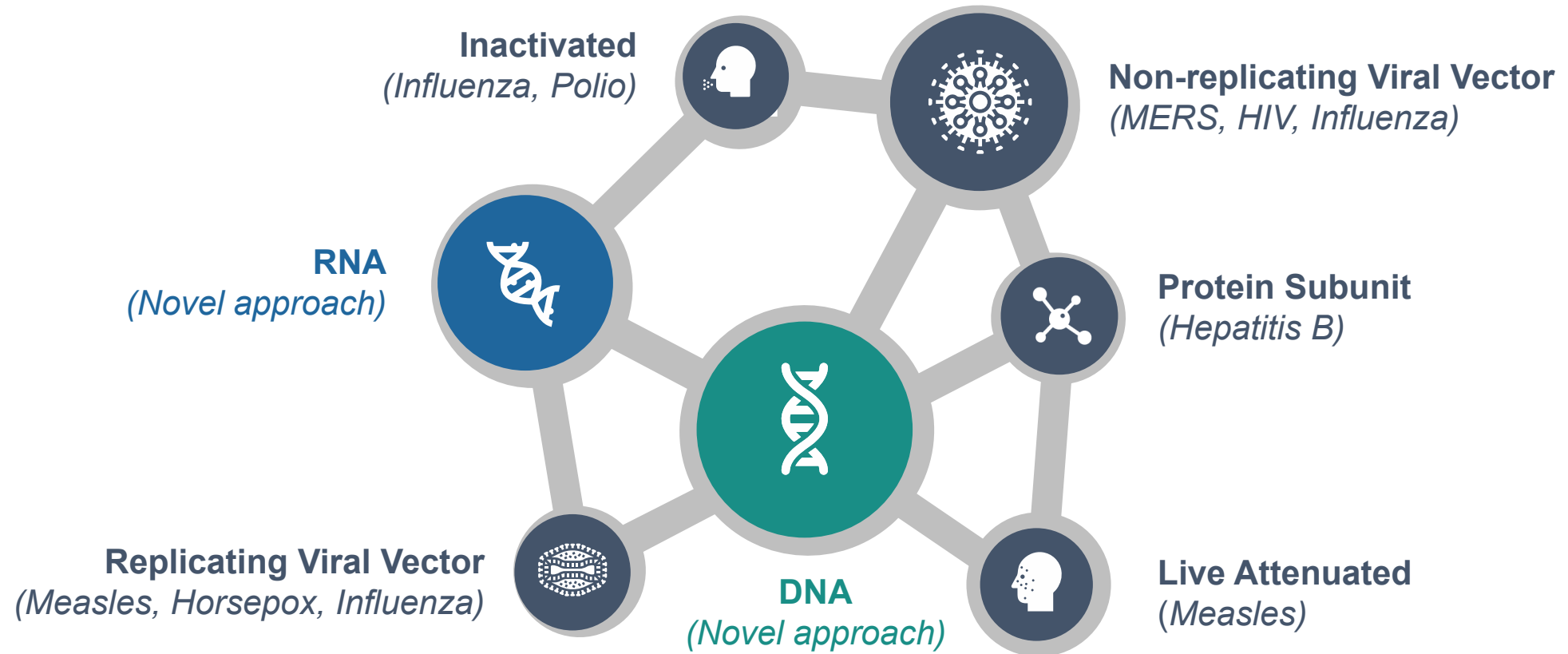
PhARMA
RESEARCH • PROGRESS • HOPE

Understanding SARS-CoV-2



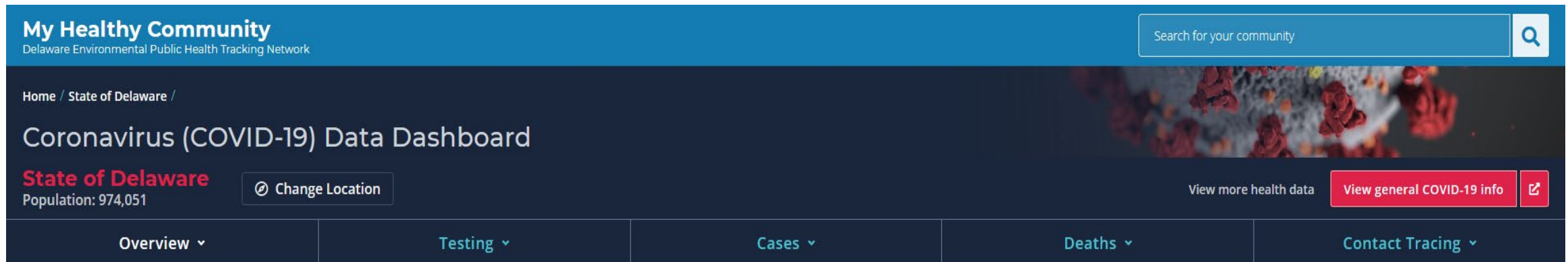
Using Many Approaches to Develop Vaccines

The science of vaccines has led to multiple **cutting-edge approaches to vaccine development**, all of which are being considered and pursued as potential pathways to a COVID-19 vaccine.



For vaccine information

- To plan for vaccination of your workforce: vaccineplanning@Delaware.gov
- Public vaccine questions email box: Vaccine@Delaware.gov
- Data on vaccines provided will be available on My Healthy Community.
- Delaware COVID-19 website: de.gov/coronavirus



The screenshot shows the 'My Healthy Community' website interface. At the top, there's a blue header with the site name and a search bar. Below this is a dark blue navigation bar with the title 'Coronavirus (COVID-19) Data Dashboard' and a 'Change Location' button. The main content area features a grid of tabs: 'Overview', 'Testing', 'Cases', 'Deaths', and 'Contact Tracing'. On the right side of the dashboard, there are two buttons: 'View more health data' and 'View general COVID-19 info'.

My Healthy Community
Delaware Environmental Public Health Tracking Network

Search for your community

Home / State of Delaware /

Coronavirus (COVID-19) Data Dashboard

State of Delaware
Population: 974,051

Change Location

View more health data View general COVID-19 info

Overview Testing Cases Deaths Contact Tracing

Walgreen's COVID-19 Vaccine Update

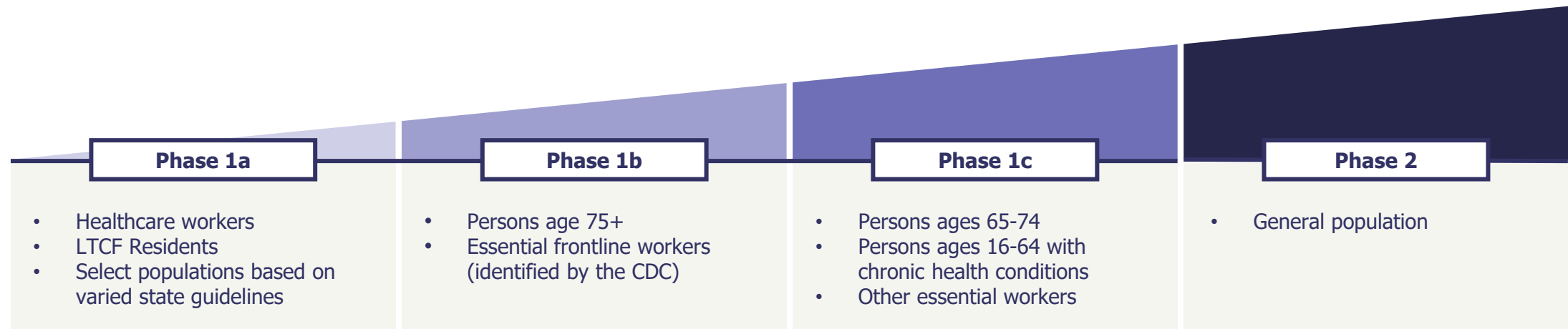


Member of Walgreens Boots Alliance ©2021 Walgreen Co. All rights reserved.



We are following guidance from the CDC and federal and state governments on vaccine distribution.

The CDC make recommendations on how to prioritize COVID-19 vaccine recipients – or who should receive COVID-19 vaccine – based on risk when supply is limited.



1. Evidence Table for COVID-19 Vaccines Allocation in Phases 1b and 1c of the Vaccination Program. Centers for Disease Control and Prevention (CDC). Web site. <https://www.cdc.gov/vaccines/hcp/acip-recs/vacc-specific/covid-19/evidence-table-phase-1b-1c.html>. Updated December 22, 2020. Accessed December 30, 2020.

2. People with Certain Medical Conditions. Centers for Disease Control and Prevention (CDC). Web site. <https://www.cdc.gov/coronavirus/2019-ncov/need-extra-precautions/people-with-medical-conditions.html>. Updated December 29, 2020. Accessed December 30, 2020.

Flexible, scalable administration models to accommodate our patients and customers.



In-store

Jurisdictions may want to use an in-store program for their populations.

This may be the predominant solution for phase 1b/1c and future phases. This could include an appointment, voucher or walk-in process.*



Offsite

Employer site, parking lot, community center, etc.

Clinics can be facilitated anywhere there is space for the proper set-up and social distancing requirements.



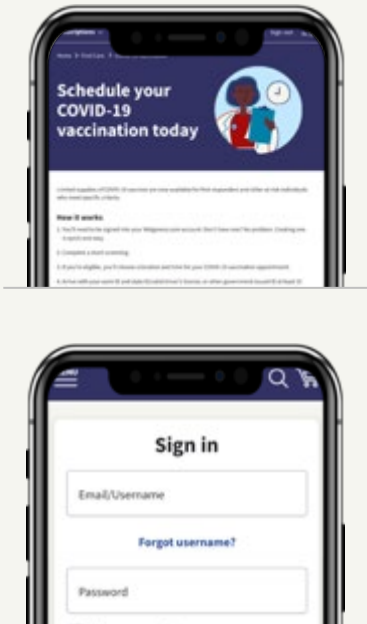
Mass Event

Walgreens can facilitate a mass event for multiple entities to send applicable populations to get vaccinated.

*Options based on phase and inventory

Online vaccine scheduling and eligibility screening enhances the patient experience.

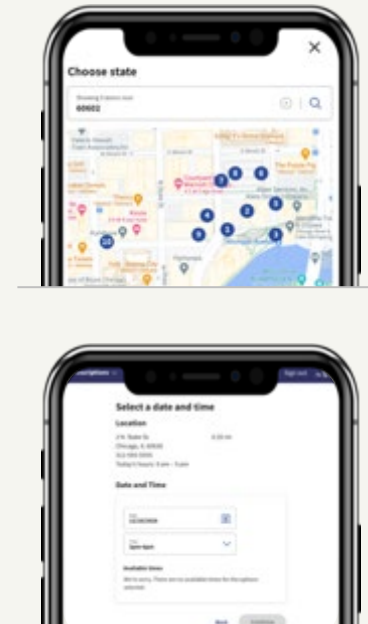
Getting started



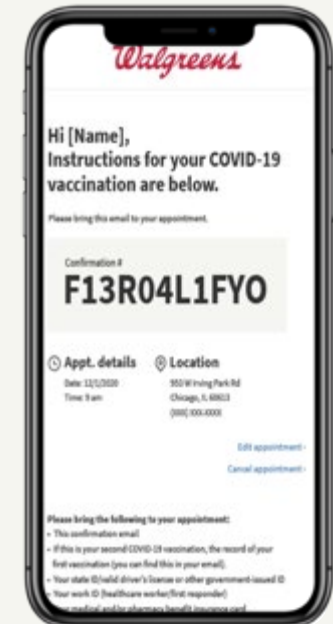
Screening



Scheduling



Confirmation



Vaccinations will be provided on an appointment basis only; customers should be directed to schedule

