

US POLITICAL ELECTION UPDATE WITH THE US CHAMBER OF COMMERCE

OCTOBER 25 | 11:00 AM - 12:00 PM



ASHLEE RICH STEPHENSON

Vice President & National Political Director

Host:



DELAWARE STATE
CHAMBER OF COMMERCE

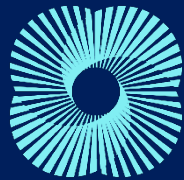


National Political Update

Ashlee Rich Stephenson

October 25, 2022

U.S. Chamber of Commerce



The Chamber's Strategic Objectives 2021-2022

1. **Offense:** To grow the number of pro-business, Chamber-friendly members of Congress in both parties
2. **Defense:** To support elected officials willing to work across the aisle to advance the Chamber's priorities
3. **Mobilize:** To mobilize constituents who agree with the Chamber to advance our policy and political objectives

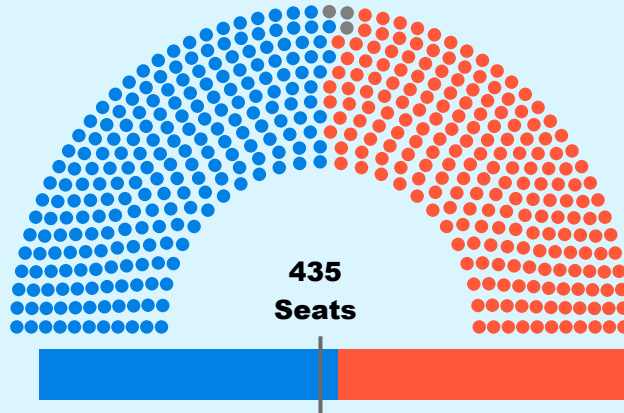


Shifts in partisan control and protracted political disruption

- Unified Democratic Control
- Unified Republican Control
- Divided Control
- Senate 50/50
- Status Quo

1960 P	1962	1964	1966	1968 P	1970	1972	1974	1976 P	1978
S 1980 P	1982	1984	S 1986	1988	1990	1992 P	H and S 1994	1996	1998
2000 P	S 2002	2004	H and S 2006	2008 P	H 2010	2012	S 2014	2016 P	H 2018
S 2020 P	? 2022	? 2024							

117th Congress Partisan Breakdown



218 Votes for Majority*

220 Democrats

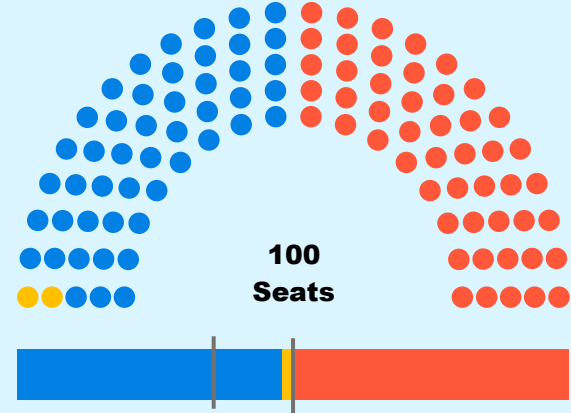
212 Republicans

0 Independents

3 Vacancies

Vacancies: FL-13, FL-22, IN-02

Retirements: 51 (32 Dem, 19 GOP)



60 Votes for
Supermajority*

51 Votes for Majority*

48 Democrats

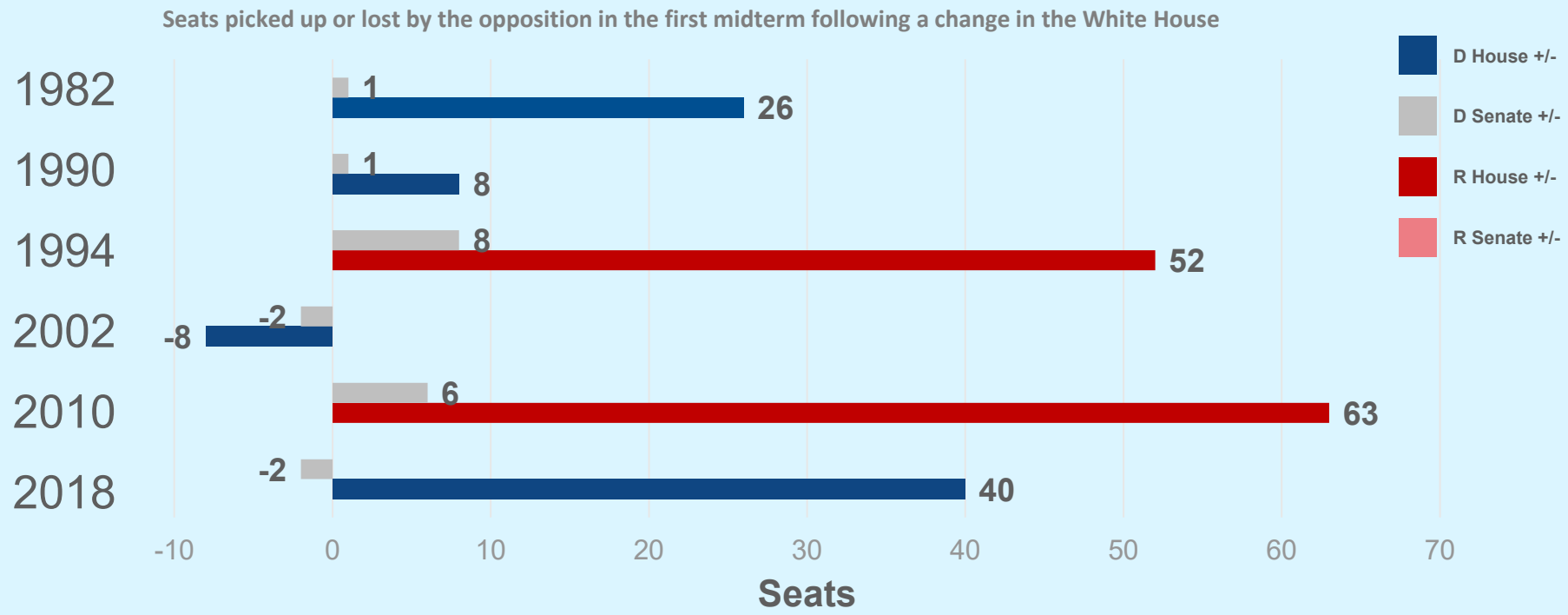
50 Republicans

2 Independents

0 Vacancies

Retirements: 6 (1 Dem, 5 GOP)

Historical Midterm Election Trends



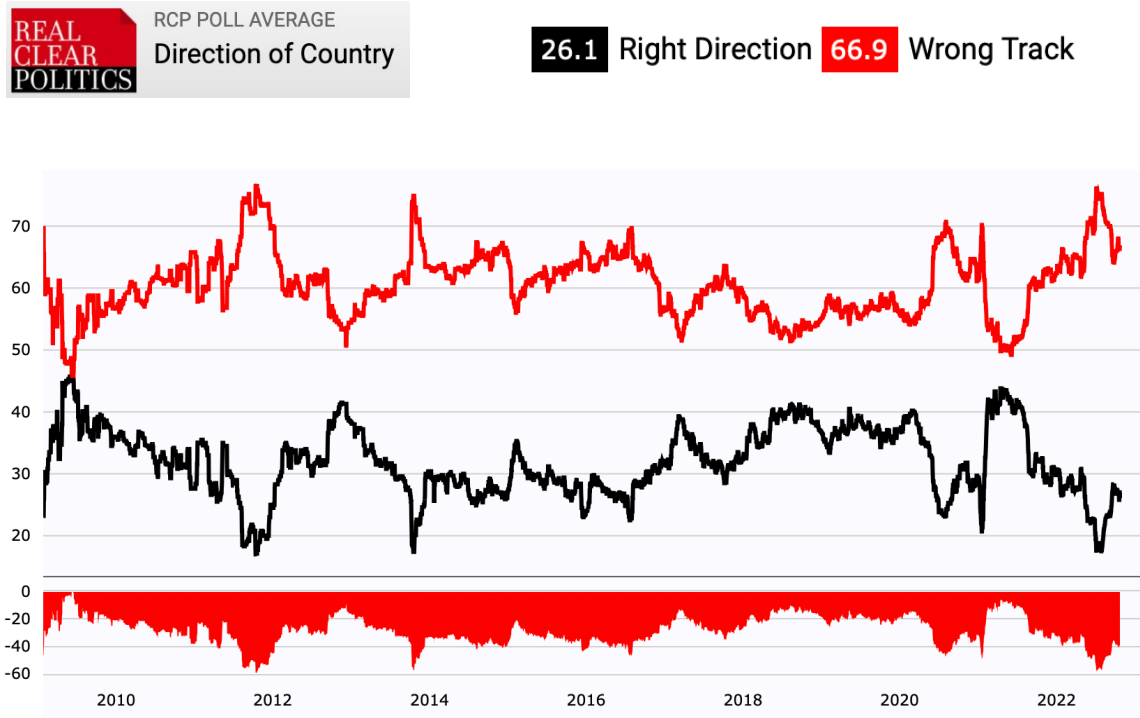
Political Environment Measurements

Voter Optimism

In October of 2020, 63% said
the country was on the
wrong track

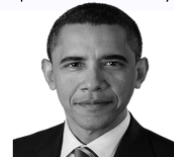
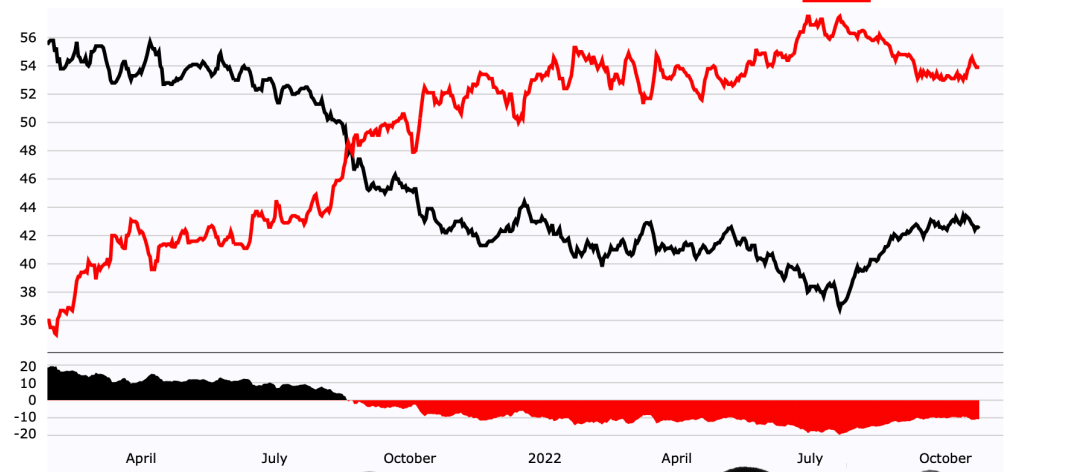


U.S. Chamber of Commerce



Presidential Job Approval Averages

Historical October averages in the first term



Approve

43%

44%

46%

64%

Disapprove

54%

52%

48%

31%

Difference

-11

-8

-2

+33



U.S. Chamber of Commerce

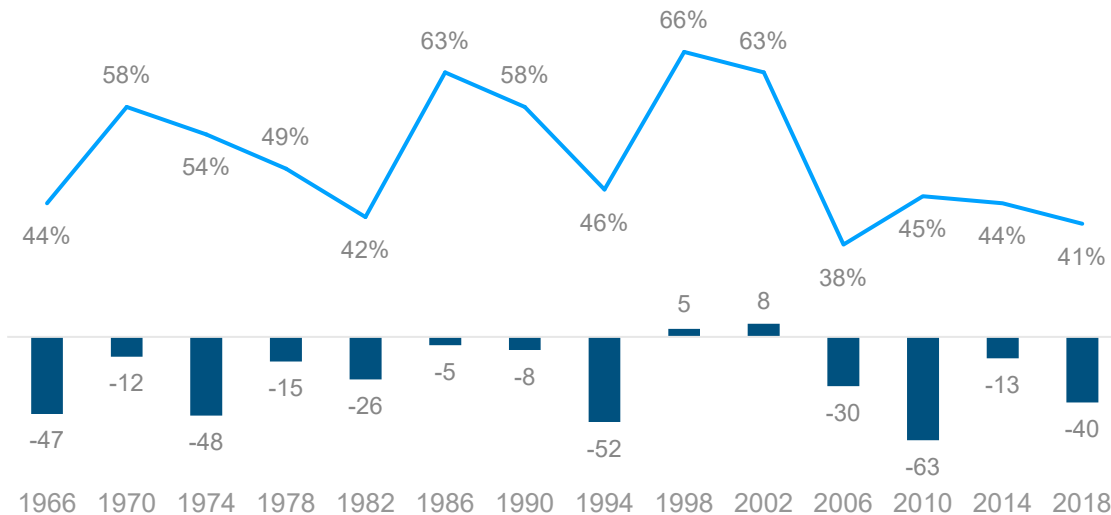
Presidents with a sub-50% approval rating lose an average of 36 seats in midterm election cycles



U.S. Chamber of Commerce

Presidential job approval vs. midterm results since 1966

■ Gallup presidential approval the week before the midterm
■ Seats gained/lost by president's party in the midterm



JOB APPROVAL	AVERAGE CHANGE
Over 60%	+3 Seats
50%-60%	-12 Seats
Under 50%	-40 Seats

Political Environment Measurements

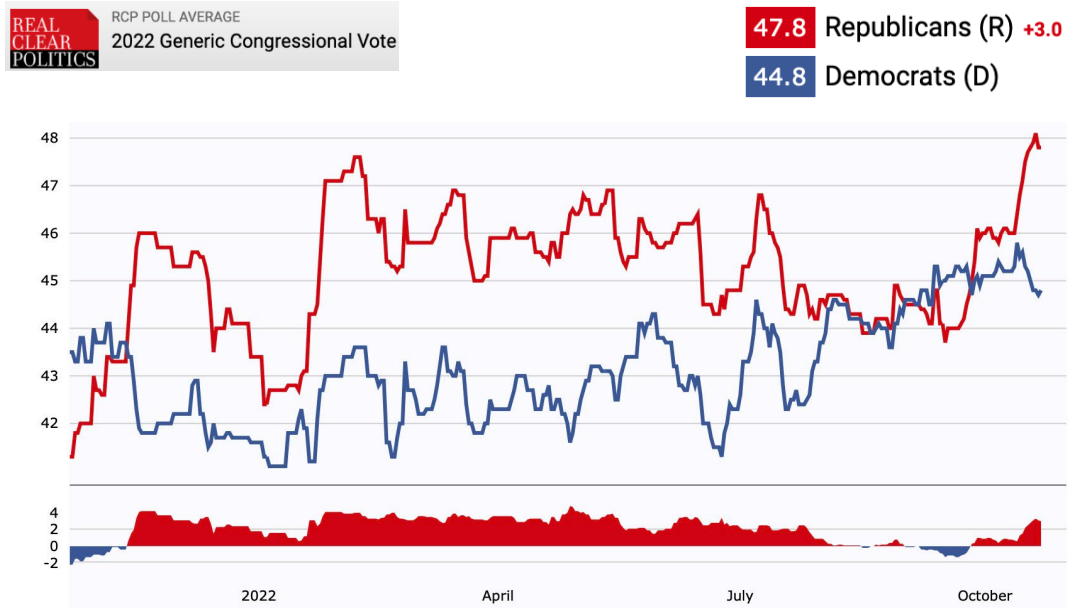
Generic Ballot

In October of 2020, the generic ballot was D+8.1 and in October in 2018, it was D+7.4



U.S. Chamber of Commerce

"If we assume that redistricting will be worth an additional 10 House seats to the GOP, Democrats would likely need a lead of at least 10 points on the generic ballot in order to maintain control of the lower chamber." - Rasmussen Reports



SCOTUS

Appointment and Key Cases

Biden and Democrats had a reset moment with appointment of Ketanji Brown Jackson.

Major 2022 Cases that have been decided:

- Vaccine Mandate
 - National Federation Of Independent Business V. Department Of Labor, Occupational Safety And Health Administration (decided 1/13/22)
- Reproductive Rights
 - Dobbs V. Jackson Women's Health Organization (decided on 6/24/22)
- 2nd Amendment
 - New York State Rifle & Pistol Association Inc. V. Bruen (decided on 6/23/22)
- Religious Liberty
 - Carson V. Makin (decided 6/21/22)



U.S. Chamber of Commerce



Looking Ahead: 2022 & 2024



U.S. Chamber of Commerce

U.S. House

- Partisanship and political gerrymandering have resulted in a declining number of traditional swing seats and electoral victories decided by five-points or less.
- In 2018, 45 seats were decided within a five-point margin.
- In 2020, 37 seats were decided within a five-point margin.
- October 2020: 60 toss up or lean seats
- October 2018: 68 toss up or lean seats

2022 Cook Political Rankings: 60 Seats “Toss Up” or “Lean”

22 Dem, 10 GOP

AK-AL	Peltola
AZ-01	Schweikert
CA-13	Open
CA-22	Valadao
CA-27	Garcia
CO-8	New Seat
IL-17	Open
IN-01	Mrvan
KS-03	Davids
ME-02	Golden
MI-07	Slotkin
MN-02	Craig
NC-13	Open
NH-01	Pappas
NE-02	Bacon
NM-2	Herrell
NV-01	Titus
NV-03	Lee
NY-17	Maloney
NY-19	Open
NY-22	Open
OH-01	Chabot
OH-13	Open
OR-05	Open
OR-06	New Seat
PA-07	Wild
PA-08	Cartwright
PA-17	Open
RI-02	Open
TX-34	Merged Seat
VA-2	Luria
WA-8	Schrier

“As of mid-January (2022), the number of seats Donald Trump carried in 2020 by at least 15 points increased from 54 to 70... The number of districts Biden carried by at least 15 points had increased from 20 to 23.”

“In 2012, after the last round of redistricting, there were 66 districts that were competitive, Wasserman said. By 2020, 51 districts were considered competitive.” - [The Guardian](#)

14 Dem, 2 GOP

CA-47	Porter
CA-49	Levin
CT-05	Hayes
IL-13	Open
MI-03	Open
MI-08	Kildee
NC-01	Open
NH-02	Kuster
NV-04	Horsford
NY-03	Open
NY-04	Open
NY-18	Ryan
OH-09	Kaptur
OR-04	Open
TX-28	Cuellar
VA-07	Spanberger

5 Dem, 7 Rep

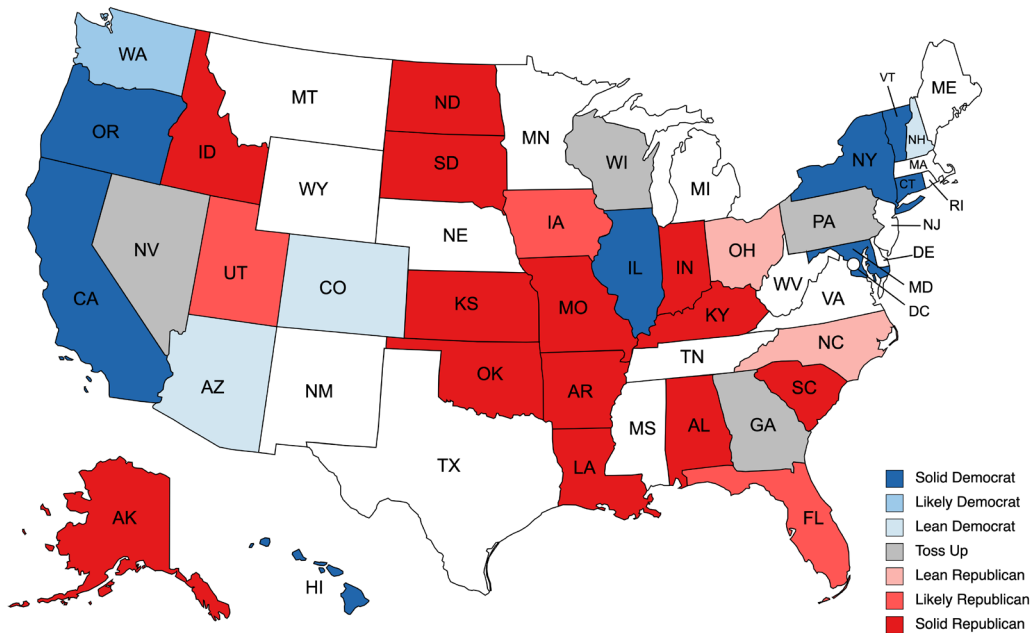
AZ-02	O'Halleran
AZ-06	Open
CA-41	Calvert
CA-45	Steel
FL-27	Salazar
IA-01	Miller-Meeks
IA-03	Axne
MT-01	New Seat
NJ-07	Malinowski
NY-01	Open
WA-03	Open
WI-03	Open

Lean Democratic

Toss Up

Lean Republican

- 35 Contests: 21 GOP, 14 Dem
- Republicans are defending five open seats: AL, MO, NC, OH, PA
- Four "toss ups" in GA (Warnock, D), NV (Cortez Masto, D), PA (Open), and WI (Johnson, R)
- Five "Lean" races in AZ (Kelly, D), CO (Bennett, D), NH (Hassan, D), NC, and OH (Open)



Created with mapchart.net

U.S. Senate

- Six out of Nine "Toss Up" and "Lean" Senate races are within three-points based on the latest RCP polling averages.

State	RCP Average - 10/24/2022	RCP Average - 9/24/2022
GA (Toss Up)	Warnock +1	Warnock +.7
NV (Toss Up)	Laxalt +.8	Laxalt +1.6
PA (Toss Up)	Fetterman +1.3	Fetterman +4.2
WI (Toss Up)	Johnson +3	Johnson +1.5
AZ (Lean Dem)	Kelly +2.5	Kelly +6
CO (Lean Dem)	Bennet +7.5	Bennet +8.6
NH (Lean Dem)	Hassan +5.4	N/A
NC (Lean Republican)	Budd +3.5	Budd +2
OH (Lean Republican)	Vance +2	Vance +2.2



U.S. Chamber of Commerce

FEC Reports

Fundraising Growth Continues

DSCC: \$214M

NRSC: \$219M

DCCC: \$296M

NRCC: \$257M

DNC: \$267M

RNC: \$297M

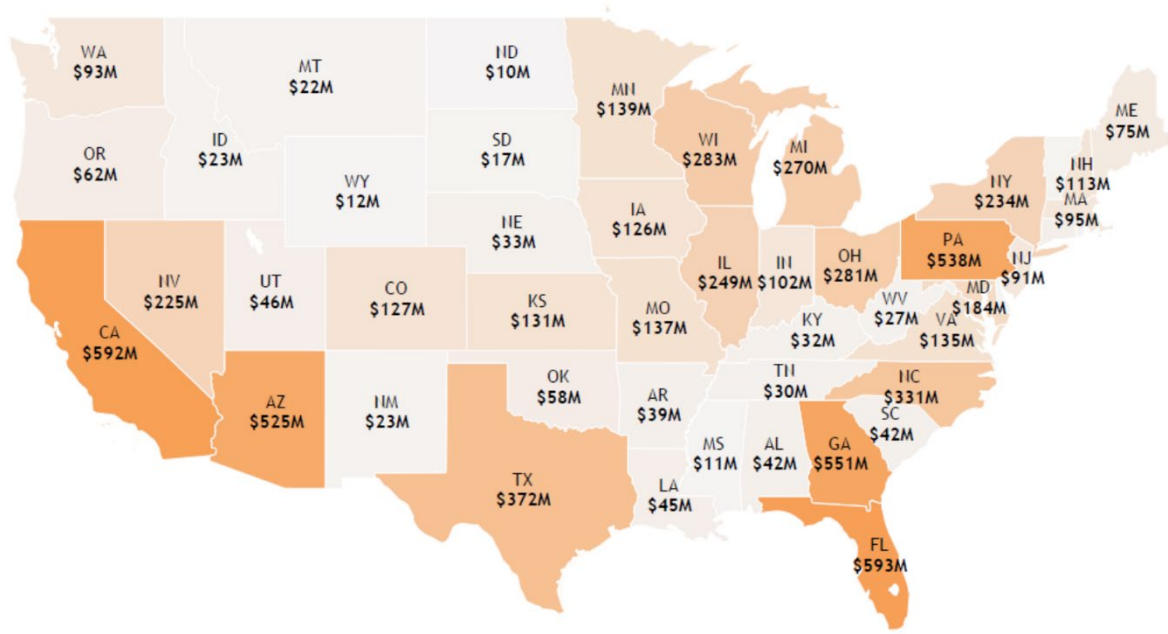
Total D: \$777M

Total R: \$773M

<u>Candidate</u>	<u>Party</u>	<u>State</u>	<u>Open/Incumbent</u>	<u>Receipts</u>	<u>COH</u>
Raphael Warnock	DEM	GA	Incumbent	\$111,348,349	\$13,852,703
Mark Kelly	DEM	AZ	Incumbent	\$75,470,014	\$13,186,128
Val Demings	DEM	FL	Challenger	\$65,529,505	\$6,647,641
Tim Scott	REP	SC	Incumbent	\$50,395,014	\$21,539,824
John Karl Fetterman	DEM	PA	Open seat	\$48,470,838	\$4,186,233
Catherine Cortez Masto	DEM	NV	Incumbent	\$45,435,480	\$5,089,745
Marco Rubio	REP	FL	Incumbent	\$44,487,395	\$9,631,857
Chuck Schumer	DEM	NY	Incumbent	\$40,490,721	\$20,231,214
Tim Ryan	DEM	OH	Challenger	\$39,045,577	\$1,424,804
Maggie Hassan	DEM	NH	Incumbent	\$36,561,675	\$4,813,508
John Kennedy	REP	LA	Incumbent	\$36,321,855	\$15,530,075
Dr. Mehmet Oz	REP	PA	Open seat	\$34,901,264	\$2,534,524
Herschel Walker	REP	GA	Challenger	\$31,894,697	\$7,362,449
Cheri Beasley	DEM	NC	Open seat	\$29,378,575	\$3,347,412
Ron Johnson	REP	WI	Incumbent	\$29,305,417	\$4,508,581
Mandela Barnes	DEM	WI	Challenger	\$26,545,629	\$3,470,773
Rand Paul	REP	KY	Incumbent	\$26,117,941	\$8,308,644
Michael Bennett	DEM	CO	Incumbent	\$19,856,503	\$4,898,614
Tammy Duckworth	DEM	IL	Incumbent	\$17,899,220	\$7,631,025
Patty Murry	DEM	WA	Incumbent	\$17,885,052	\$3,786,961
Todd Young	REP	IN	Incumbent	\$14,512,511	\$5,501,025
Ron Wyden	DEM	OR	Incumbent	\$13,635,909	\$5,986,324
Adam Laxalt	REP	NV	Challenger	\$13,544,357	\$4,000,716
Tiffany Smiley	REP	WA	Challenger	\$12,835,759	\$2,451,442
John Thune	REP	SD	Incumbent	\$12,465,658	\$17,419,928

2022 Spending Expectations: \$9B in Ads

- States with gubernatorial and senate contests will be the most expensive.
- Five states expected to surpass \$500M: FL \$593M, CA \$592M, GA \$551M, PA \$538M.
- Streaming services may benefit the most with new advertising dollars.



U.S. Chamber of Commerce

2022 Early Voting

- All mail voting in 7 states: California, Colorado, Hawaii, Nevada, Oregon, Utah, Vermont, and Washington

Key Senate states with EV/AB Dates

North Carolina

EV: October 20 – November 5

Begin mailing ballots on September 9

Pennsylvania

(N/A)* Varies by county

Begin mailing ballots on September 20

Wisconsin

EV: October 25 – November 6

Begin mailing ballots on September 22

Georgia

EV: October 17 – October 30

Begin mailing ballots on October 10

Arizona

EV: October 12 – November 4

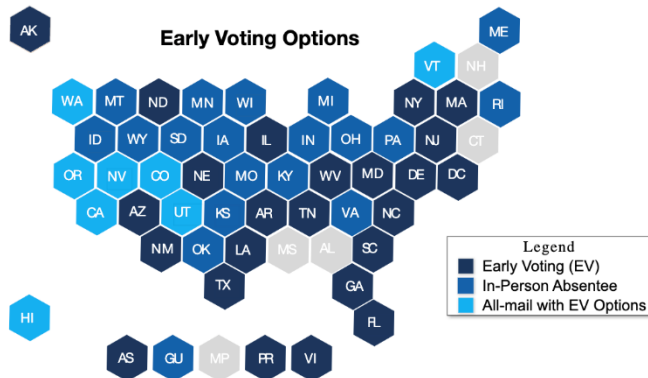
Begin mailing ballots on October 12

Alaska

EV: October 29 – November 6

Begin mailing ballots on October 14

[State by state drop down voting tool](#)



State by State Election Information

Choose a State

Alaska

Choose a state to see the dates and requirements for absentee and early voting in the 2022 primaries and general election.

Alaska

GENERAL ELECTION

General Election Date: 11/8/2022

Voter Registration Deadline: [10/9/2022](#)

Absentee Voting

No-Excuse Absentee Voting? [Yes](#)

Earliest Date that Absentee Ballots can be Mailed: [10/14/2022 \(25 days prior to election\)](#)

Last Day to Receive Absentee Ballot: [11/07/2022 by 5:00 p.m.](#)

Early In-Person Voting

Does the State have Early In-Person Voting? [Yes](#)

Early Voting Dates: [10/29/2022-11/06/2022](#)

2022 Turnout Predictions

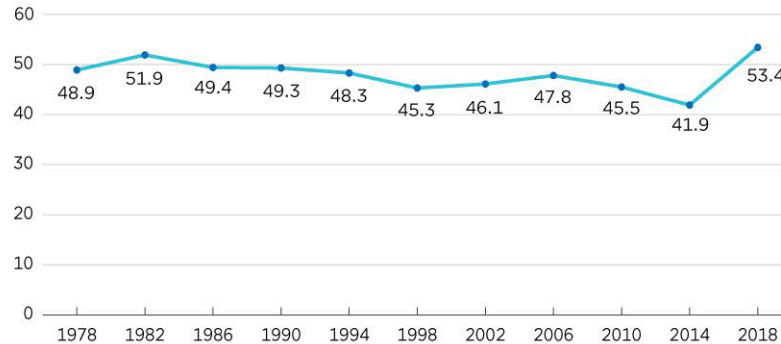
- Midterm turnout soared in 2018, with experts referring to it as a “100-year flood.”
- 2018 participation increase was led by voters ages 18-29, Hispanics, and those with some college or a college degree.
- Experts predict 2022 turnout will be comparable to 2018.
- **To Watch For:** Trends in primary voting methods.



U.S. Chamber of Commerce

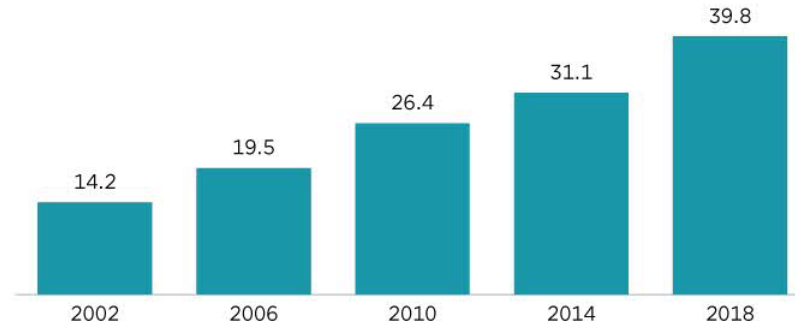
National Voter Turnout: Midterm Elections 1978-2018

(Percentage of the citizen voting-age population that voted)



Source: U.S. Census Bureau; Current Population Survey Voting and Registration Supplements: Midterm Elections 1978-2018.

Percentage of Voters That Used Alternative Methods of Voting: Midterm Elections 2002-2018



Note: Alternative methods of voting include early voting and voting by mail.
Source: U.S. Census Bureau; Current Population Survey Voting and Registration Supplements: Midterm Elections 2002-2018.

Source: [Census](#)

2022 Turnout Predictions

“The Big Send”: A new initiative led by the group, Vote Forward

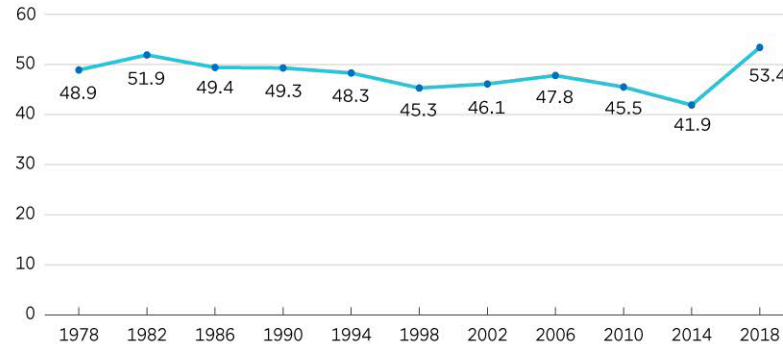
Goal:

- Assemble volunteers to write and stockpile handwritten letters as part of a get out the vote effort
- Send 10 million letters to voters urging them to vote in the 2022 midterms

Groups involved: Swing Left, Indivisible and End Citizens United / Let America Vote, among others.

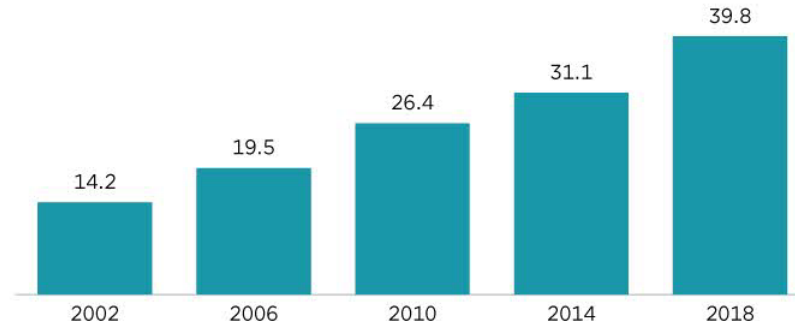
National Voter Turnout: Midterm Elections 1978-2018

(Percentage of the citizen voting-age population that voted)



Source: U.S. Census Bureau; Current Population Survey Voting and Registration Supplements: Midterm Elections 1978-2018.

Percentage of Voters That Used Alternative Methods of Voting: Midterm Elections 2002-2018



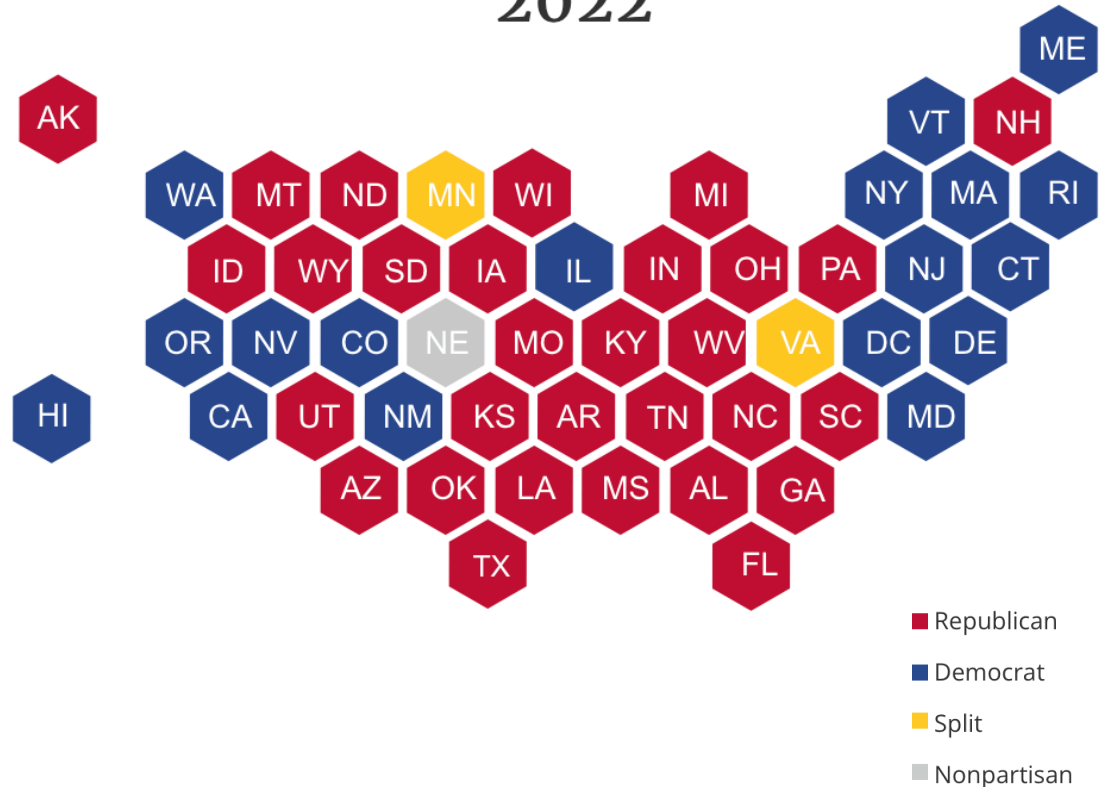
Note: Alternative methods of voting include early voting and voting by mail.
Source: U.S. Census Bureau; Current Population Survey Voting and Registration Supplements: Midterm Elections 2002-2018.

Status Going Into November 2022

- Of the 98 State Chambers with partisan control:
 - Republicans hold 61; Democrats hold 37
- Minnesota and Virginia are the only states with a split State Legislature.
- There are currently 28 Republican and 22 Democrat Governors



U.S. Chamber of Commerce



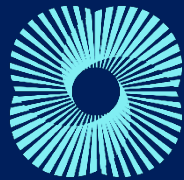


National Political Update

Ashlee Rich Stephenson

October 25, 2022

U.S. Chamber of Commerce

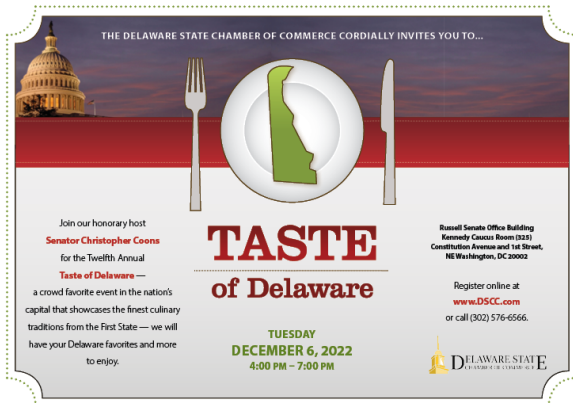


UPCOMING EVENTS

Thursday, November 10



Tuesday, December 6th



Wednesday, November 30



Monday, January 9th



Register online at www.DSCC.com